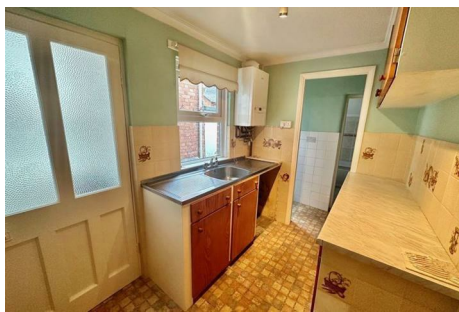


DANIEL BUTTERWORTH

LETTINGS & PROPERTY MANAGEMENT



21 Western Road
Newton Abbot, TQ12 1BE

A spacious 3 bedroom mid terrace located close to the town centre of Newton Abbot. Accommodation comprises; Hallway, Lounge / Dining Room, Kitchen, Bathroom, Separate Shower, 3 Bedrooms and Courtyard Garden. Gas central heating, double glazing. Parking by permit.

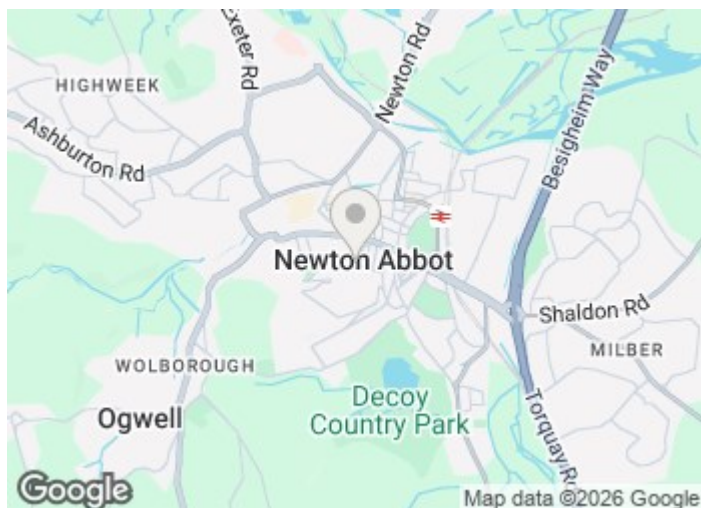
£1,000

21 Western Road

, Newton Abbot, TQ12 1BE



- 3 Bedroom House
- Garden
- Close to Town
- Central Heating
- Good Size Throughout
- Double Glazing



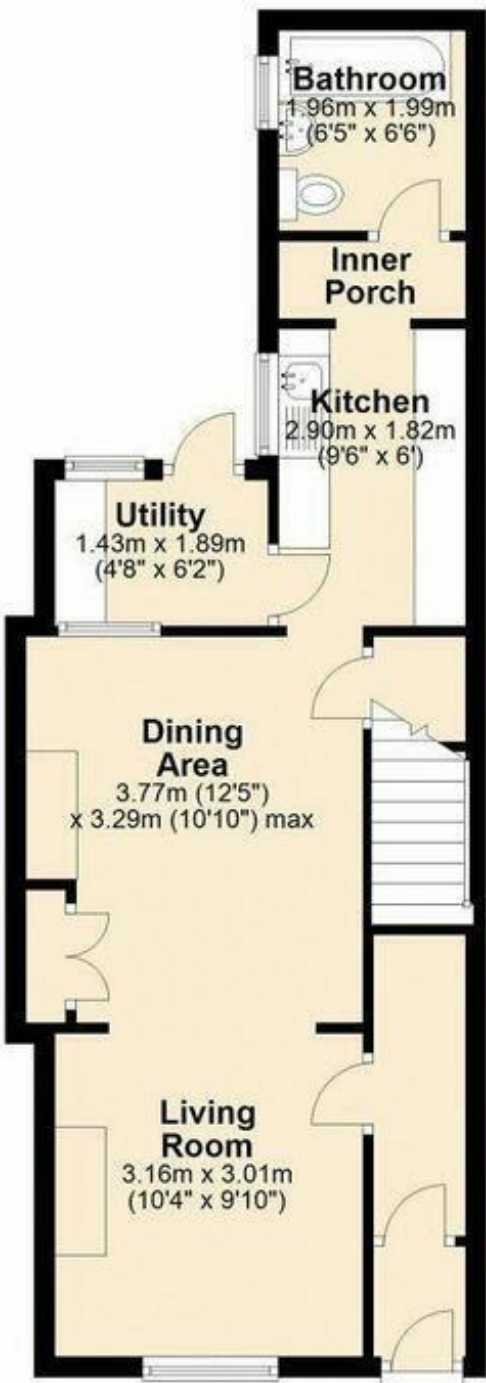
[Directions](#)



Floor Plan

Ground Floor

Approx. 43.4 sq. metres (467.0 sq. feet)



First Floor

Approx. 34.1 sq. metres (366.7 sq. feet)



Total area: approx. 77.5 sq. metres (833.7 sq. feet)

These particulars, whilst believed to be accurate are set out as a general outline only for guidance and do not constitute any part of an offer or contract. Intending purchasers should not rely on them as statements of representation of fact, but must satisfy themselves by inspection or otherwise as to their accuracy. No person in this firms employment has the authority to make or give any representation or warranty in respect of the property.

Energy Efficiency Rating		
	Current	Potential
Very energy efficient - lower running costs		
(92 plus) A		
(81-91) B		
(69-80) C		
(55-68) D		
(39-54) E		
(21-38) F		
(1-20) G		
Not energy efficient - higher running costs		
England & Wales		
EU Directive 2002/91/EC		